

EMMANUEL ANGLICAN COLLEGE STEM & DIGITAL TECHNOLOGY CENTRE

A Connected Learning Ecosystem

The STEM & Digital Technology Centre at Emmanuel Anglican College is organised around a central Pitch Space, forming the academic heart of the building. Open learning areas and specialist rooms for engineering, VR, digital technologies and fabrication radiate outward, creating a seamless progression from ideation to prototype to presentation. The axonometric view below reveals a future-focused environment designed to support collaboration, adaptability and innovation.



OPEN CLASSROOMS



PITCH SPACE



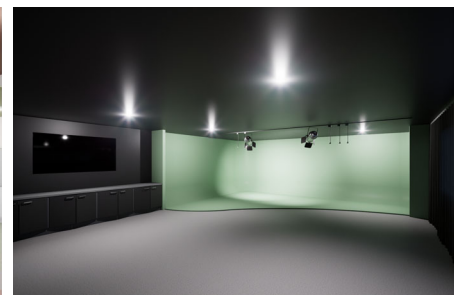
AXONOMETRIC VIEW



AMENITIES



CLASSROOMS



PRODUCTION & VR



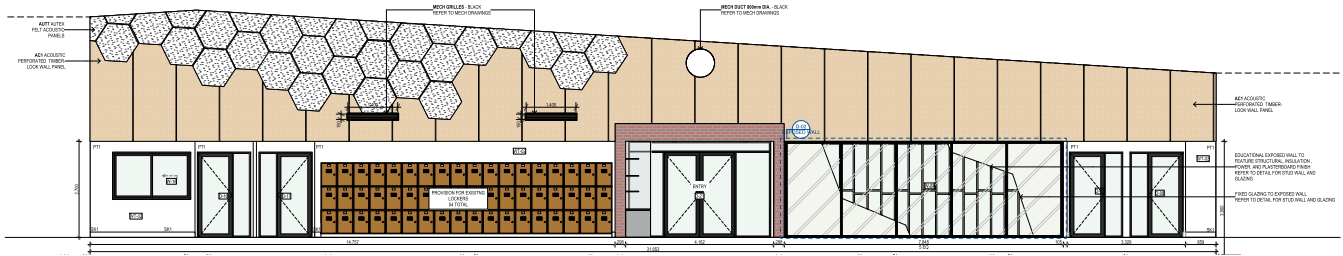
EMMANUEL ANGLICAN COLLEGE
STEM & DIGITAL TECHNOLOGY CENTRE
62 HORIZON DRIVE, BALLINA NSW 2478

RAUNIK
design group
ARCHITECTS

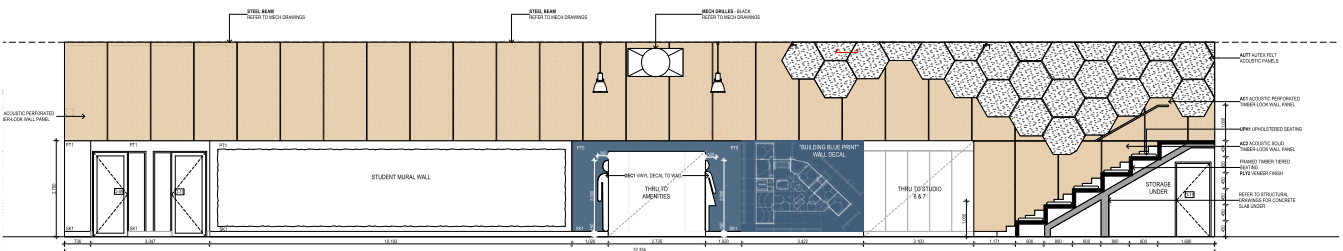
EMMANUEL ANGLICAN COLLEGE STEM & DIGITAL TECHNOLOGY CENTRE

Learning on Display

The interiors dissolve traditional classroom boundaries to create an active, flexible learning landscape. Tiered seating embeds presentation into daily practice, while exposed structure and services transform the building into a teaching tool. Carefully integrated acoustic treatments balance openness with focus. Specialist technology spaces enable deep technical exploration, ensuring the architecture directly reflects the school's commitment to hands-on, future-ready education.



OPEN CLASSROOM - INTERNAL ELEVATION 1



OPEN CLASSROOM - INTERNAL ELEVATION 2



OPEN CLASSROOM AREA



PITCH SPACE TIERED SEATING



ENTRY DISPLAY WALL



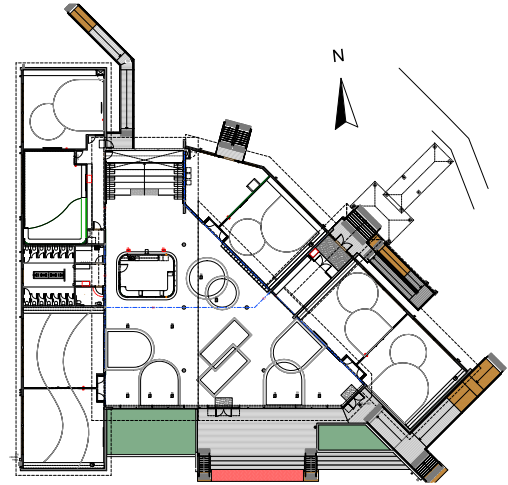
**EMMANUEL ANGLICAN COLLEGE
STEM & DIGITAL TECHNOLOGY CENTRE
62 HORIZON DRIVE, BALLINA NSW 2478**

RAUNIK
design group
ARCHITECTS

EMMANUEL ANGLICAN COLLEGE STEM & DIGITAL TECHNOLOGY CENTRE

Contemporary Form, Integrated Identity

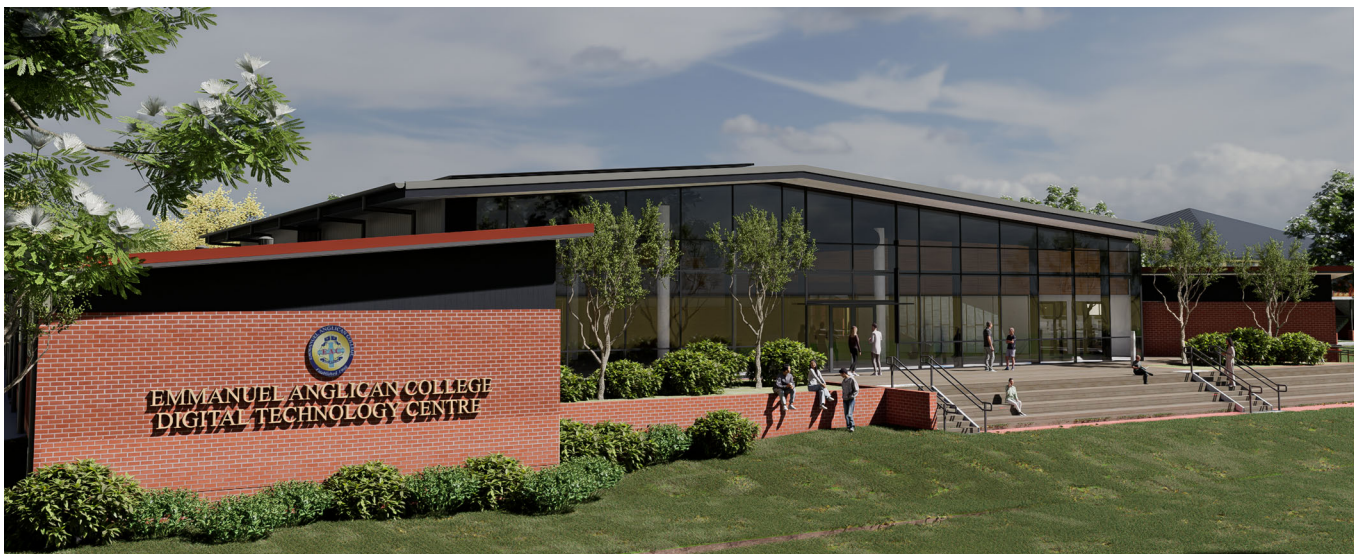
The facade expresses innovation through clarity and restraint, aligning with the scale and rhythm of the existing campus while signalling a progressive new chapter. Transparency into key learning areas reveals activity within, reinforcing a culture of openness and collaboration. As an extension, the building strengthens campus identity, distinct in purpose, yet seamlessly integrated into the life of the school.



FLOOR PLAN



SOUTHERN ELEVATION



EXTERIOR PERSPECTIVE IMAGERY



**EMMANUEL ANGLICAN COLLEGE
STEM & DIGITAL TECHNOLOGY CENTRE
62 HORIZON DRIVE, BALLINA NSW 2478**

RAUNIK
design group
ARCHITECTS